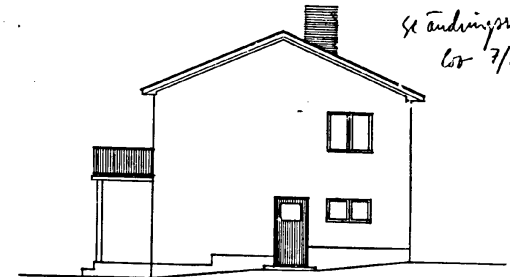
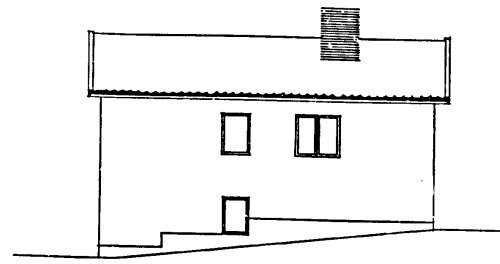
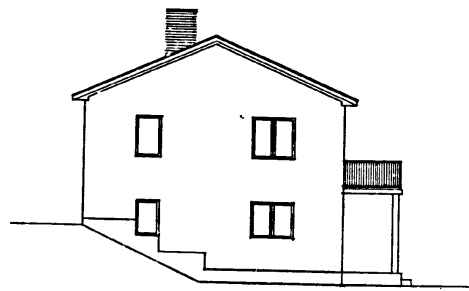
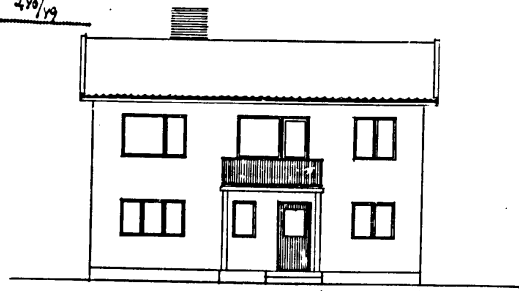
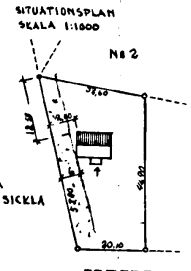
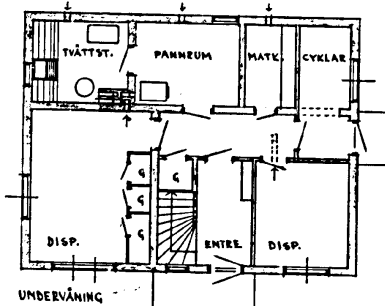
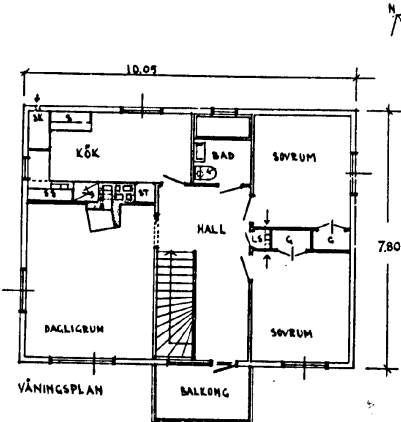


NYBYGGNAD Å TOMT SKURÖ 1<sup>41</sup> NACKA SÖKKEN  
STOCKHOLMS LÄN

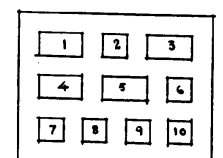
KONST BYGGHUS AB  
ÅR 28 DEC 1948  
2/10/49



2/10/49  
7/6-50  
10.1.1949  
4. ändring  
7/6-50



SEKTION GENOM SKOSTENSSTOCK  
ÖVAN VINDSBJÄLKLAG - SKALA 1:20

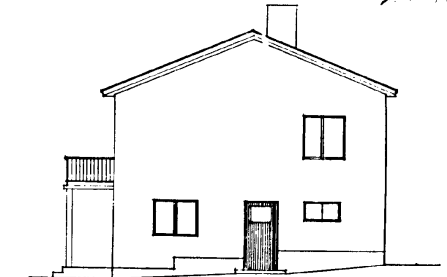
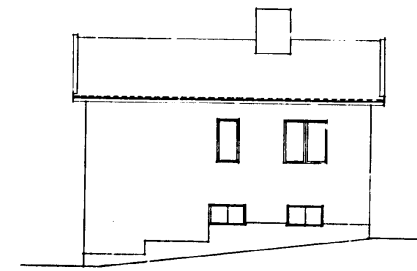
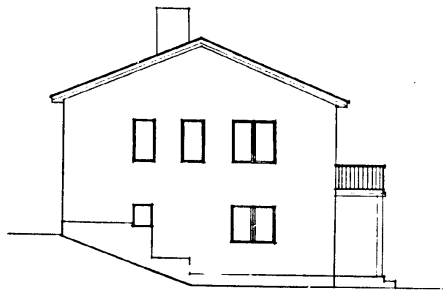
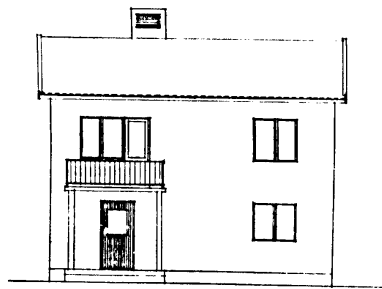


- 1 - BÖCKÖR FRÅN BÄLLEUM
- 2 - TVÄTTST.
- 3 - PANNEUM
- 4 - KÖK
- 5 - TVÄTTST.
- 6 - DISP.
- 7 - SOVRUM
- 8 - DISP.
- 9 - SOVRUM
- 10 - BÄLLEUM

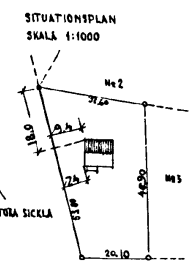
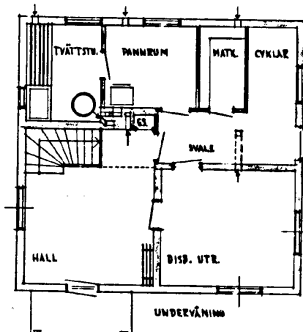
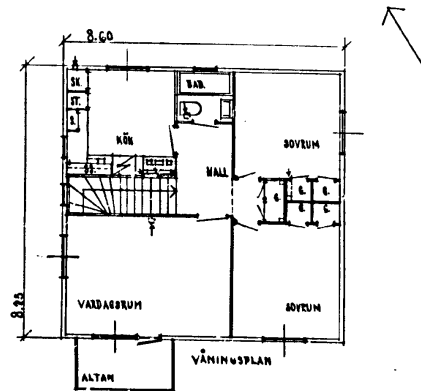
sh 755

HERRE HILMER SVENDEN  
ST. NYCKELVIKEN EKTORP  
27/11/49 Skala 1:100 N: 2527

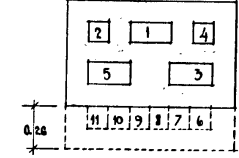
NYBYGGNAD Å TOMT SKURÖ 1401 NACKA SÖKKEN  
STOCKHOLMS LÄN.



2/10/49  
7/6-50  
10.1.1949  
4. ändring  
7/6-50



SEKTION GENOM SKOSTENSSTOCK  
SKALA 1:20



- 1 - FÖRRE FRÅN PANNEUM
- 2 - TVÄTTST.
- 3 - HALL I V.
- 4 - KÖK
- 5 - DISP. I V.
- 6 - SOVRUM
- 7 - BAD
- 8 - VÅRDBÄRUM
- 9 - VIND

REV. 27/11/50

sh 755

HERRE HILMER SVENDEN  
ST. NYCKELVIKEN EKTORP  
27/11/50 Skala 1:100 N: 2527  
LPHGHEDS SÄGVERKS AB T. 1. E. 9  
DALA-HUS